



NEWSLETTER



IN THIS ISSUE

Dance-a-thon
Class Placement Requests
School Council
Hot Lunch/Popcorn
Wellness Team Message
Hat's On for Mental Health
FNMI Newsletter
Help Wanted
Registration Reminders
Dates of Importance
Breakfast Support - Help Req'd



DANCE-A-THON

Thank you for supporting the school to fundraise for our final pieces of accessible playground equipment. We raised over **\$20,000** with the help of 285 donors. Thank you to School Council for organizing and supporting this fun schoolwide event!



Our next School Council Meeting will take place on Wednesday, May 5th using Microsoft Teams. A Link to the meeting and the meeting agenda will be emailed to all parents in our community next week. If you do not receive this information, please contact the office.

CLASS PLACEMENT

Teachers and administrators will be working together to create balanced class lists for the 2021-2022 school year. If you feel you need to provide additional information to be considered in regards to your child's classroom placement, please complete the form below and email it to Mrs. Ramotowski at carlie.ramotowski@lethsd.ab.ca by May 7th.

[Class Placement Form](#)



DR. PROBE WELLNESS TEAM MESSAGE

The school year is winding down and students, staff and parents begin to look forward to summer holidays, it is on the horizon. This is such a great opportunity to reflect on the past school year and honour the strength, commitment, and hope we have all shown. We have been challenged to bring our best each day and have endeavored to deliver. As have the students and families that we are so fortunate to share our community with. There is an amazing online resource that may be helpful to families. Coping Skills for Kids shares practical strategies to help kids cope with anxiety, stress and anger. Check it out! <https://copingskillsforkids.com/>

This first week of May is Mental Health Awareness Week and as a school community we continue grow and learn about mental health and well-being and support the students and staff along that journey. The message of this year's awareness campaign was 'Name it don't numb it'. The Wellness Team prepared a lesson for teachers to use in their classroom. Students are encouraged to name and express their feelings so they might manage and cope with strength. Ask them about their 'name tag' activity. Also, Wednesday, May 5th is Hat's On For Mental Health! Please encourage your child to wear a hat!



THE LOOP

MAY 2021

The May edition of The Loop, put out by the school division's Mental Health Capacity Building Team, is available by clicking the link below.

[Click here to access the newsletter](#)



The May edition of the Caregiver Education Newsletter, put out by AHS, is available by clicking the link below. In this month's newsletter, parents can find information on education sessions, lunch & learn webinars and drop-in series offering information and education surrounding many important topics.

[Click here to access the newsletter](#)



FNMI NEWSLETTER

Please follow the link below to access the May edition of our Division's FNMI newsletter.

[Link to Newsletter](#)



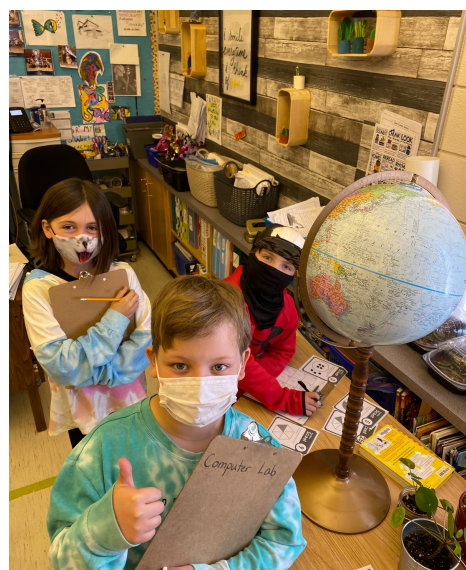


HELP WANTED

We are looking for someone to work one hour before school each morning to make breakfasts for students that follow Canada's Nutrition Guidelines. This person would also be responsible for ordering food and filling nutrition bins for classrooms on Monday mornings. The pay is \$15/ hour. If

you are interested, please email

carlie.ramotowski@lethsd.ab.ca





KINDERGARTEN REGISTRATION

Kindergarten registration for the 2021-2022 school year is open! A child turning 5 years of age on or before December 31, 2021 is eligible for Kindergarten for the 2021-2022 school year.

[Register by clicking on this link](#)

Once you have these forms filled in please drop them at the school office with your child's birth certificate and proof of address.

REGISTRATION: RETURNING STUDENTS

For all students returning to Probe in the Fall, we ask you to please complete the online registration form no later than Tuesday, May 4th. The link to register has been mailed out to all families, if you have any issues or questions please contact the school.



Please enjoy a compilation of the many learning activities and connections students were able to make through the month of April. Follow the link to view: [FLASHBACK VIDEO](#)

DATES OF IMPORTANCE

May 2: Deadline to Order Hot Lunch through SchoolCashOnline

May 3: No School for Early Education Program

May 5th: Hats on for Mental Health/School Council @ 6:30 PM (TEAMS)

May 10th: Deadline to Order Popcorn through SchoolCashOnline

May 12th: Hot Lunch

May 14th: "Backwards" Theme Day/Popcorn Friday

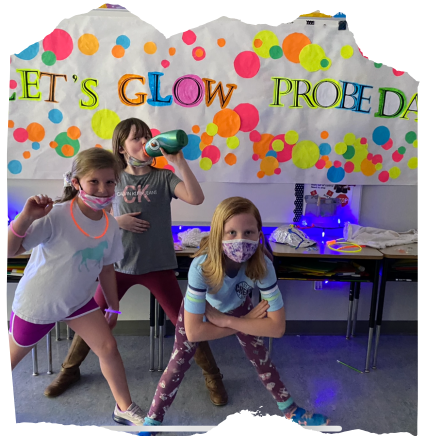
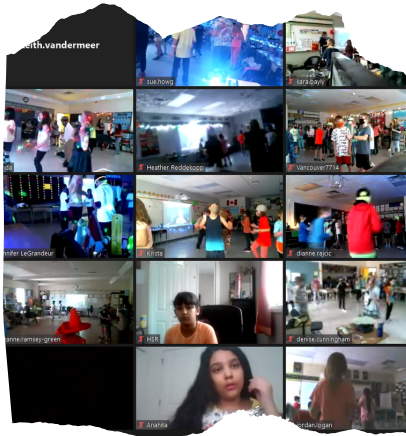
May 24th: No School (Victoria Day)/Deadline to Order Popcorn through SchoolCashOnline

May 25th: PD Day (No School for Students)

May 28th: Popcorn Friday

May 30th: Deadline to Order Hot Lunch through SchoolCashOnline

DANCE-A-THON PHOTOS



[« Previous](#)

May 2021

[Next »](#)

Sunday	Monday	Tuesday	Wednesday	Thursday	Friday	Saturday
						1
2 Deadline to order Hot Lunch	3 No Early Education Classes	4	5 Hats on for Mental Health School Council, VIRTUAL MEETING 6:30 pm	6	7	8
9	10 Deadline to order Popcorn	11	12 Hot Lunch	13	14 Backwards Day Popcorn Friday	15
16	17	18	19	20	21	22
23	24 Deadline to order Popcorn No School - Victoria Day	25 No School-PL Day	26	27	28 Popcorn Friday	29
30 Deadline to order Hot Lunch	31					